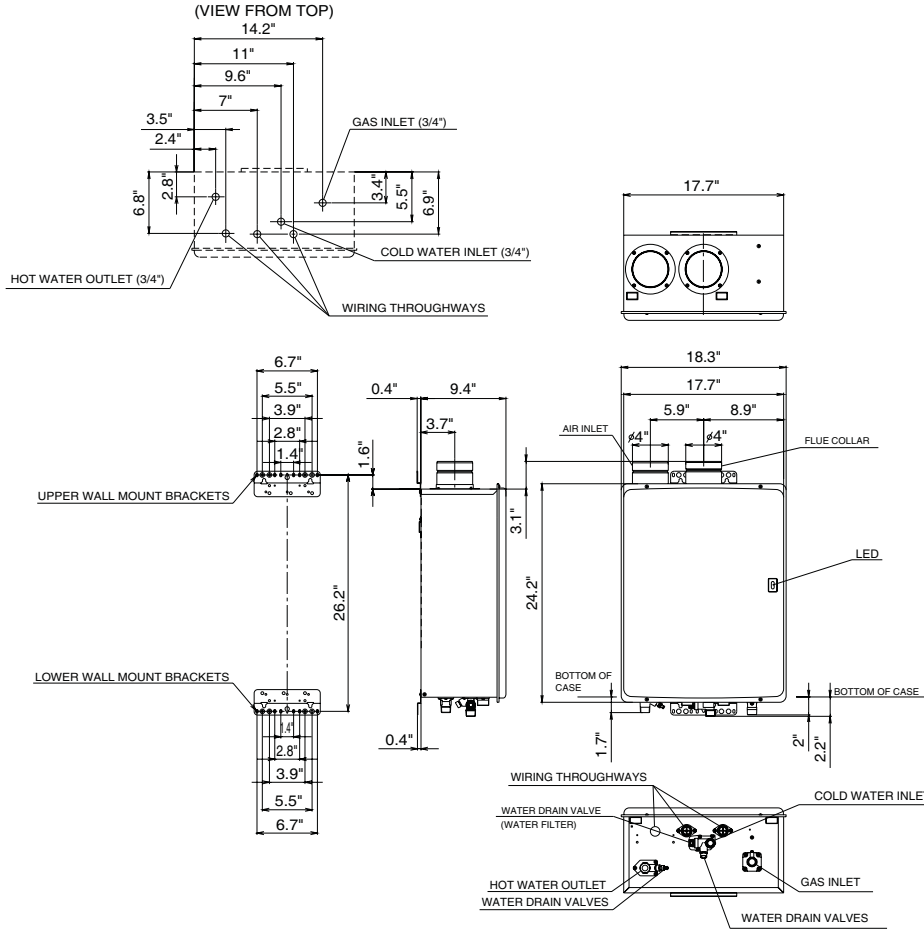


Model N-084M-DV Tankless Water Heater



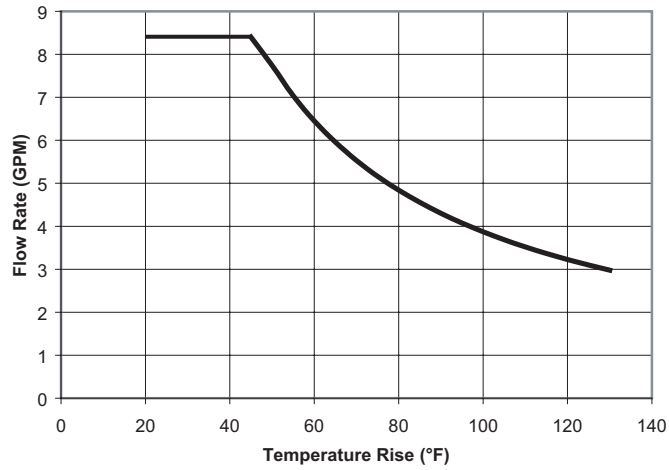
Item		Specification
Model Name		N-084M-DV
Type	Installation	Indoor, Wall Hanging
	Air-supply/Exhaust	Power Vented
Ignition		Direct Ignition
Operating Water Pressure		15 - 150 PSI
Minimum Flow Rate		0.7 GPM
Gas Supply Pressure		NG : 5.0" - 10.5" LP : 10.5" - 14.0"
Dimensions		24.2"(Height) x 18.3"(Width) x 9.4"(Depth)
Weight		63 (pounds)
Water Holding Capacity		0.3 Gallon
Connection Sizes	Water Inlet	3/4"
	Hot Water Outlet	3/4"
	Gas Inlet	3/4"
Power	Supply	120VAC(60Hz)
	Consumption	NG: 80W LP: 93W Freeze Prevention 135W
Material	Casing	Zincified Steel Plate / Acryl Coating
	Flue Collar	Stainless Steel
	Heat Exchanger	Copper Sheeting, Copper Tubing
Safety Devices		Flame Rod, Thermal Fuse, Lightning Protection Device (ZNR), Electric Leakage Prevention Device(GFCI), Overheat Prevention Device, Freezing Prevention Device, Fan Rotation Detector
Included Accessories		Remote Cotroller, Remote Controller Cord, Anchoring Screws
Optional Accessories		Isolator EXP (#IK-WV-2), Outdoor Vent Cap (#VC-4-1), Pipe Cover (#PC-084), Remote Controller Outdoor Junction Box (#RC-OJB), ScaleShield (#SS-HB-2), Quick-Connect Cable(#QC-1M), Multi-System Controller (SC-201-6M)

NORITZ AMERICA CORPORATION

11160 Grace Avenue, Fountain Valley, CA 92708 Tel. 1-866-7NORITZ www.noritz.com

Model N-084M-DV Product Performance

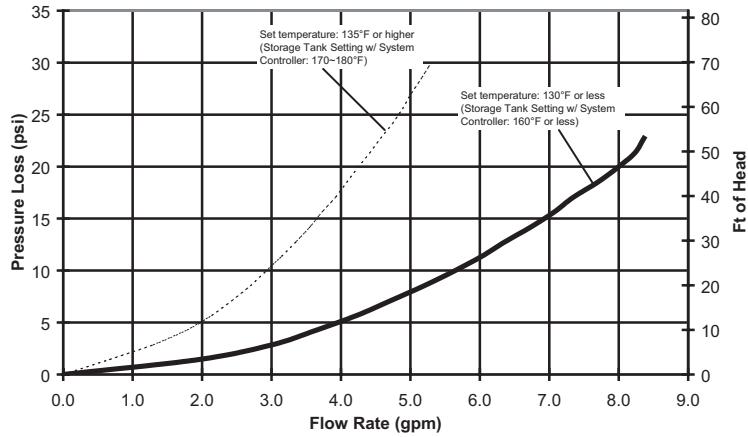
Flow Rates



Temperature Rise (°F)	20	30	40	45	50	60	70	80	90	100	110	120	130
Flow Rate (GPM)	8.4	8.4	8.4	8.4	7.8	6.5	5.5	4.8	4.3	3.9	3.5	3.2	3.0

*For peak flow rates in shaded areas, contact Noritz for proper setting.

Pressure Loss



Item		Maximum Performance	Minimum Performance
Gas Consumption	NG	236,000 btuh	21,000 btuh
	LP	236,000 btuh	21,000 btuh
Hot Water Capacity	35°F Rise	8.4 Gal/min.	
	45°F Rise	8.4 Gal/min.	
	77°F Rise	5.0 Gal/min.	
	100°F Rise	3.9 Gal/min.	
Capacity Range		0.7 - 8.4 Gal/min.	
Temperature Settings		100-150°F (In 5°F intervals) ,160, 170, 180°F (14 Options)	
Default Temperature Options		120, 130, 140, 180°F (Default is 120°F)	
Features		Quick-Connect (2 units), Multi-System (Up to 24 units), Pump Control	
Warranty		10/3- Residential, 3/3- Commercial or Circulation Use	
Approvals		CSA, UPC, NSF	

Noritz America reserves the right to discontinue, or change at any time, the designs and/or specifications of its products without notice.